

STRIP GRATE

— AUSTRALIA —

Shower Grates



ABOUT US

At Strip Grate Australia, we aimed to design a product that endures the demanding environment of a bathroom. With our expertise in waterproofing, we understand how vital it is to choose the right product to prevent future water damage problems. Our shower drains and grates are designed to fit directly into standard plumbing fixtures, and they are both stylish and straightforward to use.



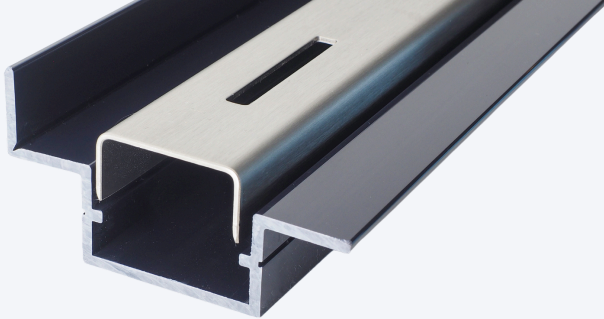
STRIP GRATE VL

We chose brass for the VL range because of its outstanding durability, longevity, style, and functionality. Its resistance to corrosion makes brass a suitable choice for wet areas and an investment you'll have for decades.

Our stainless steel grate is made from 306-grade stainless steel. This material provides excellent strength and durability, especially in humid conditions, and is resistant to corrosion.

The Strip Grate VL is a slimline 38mm shower drain created to be sleek and unobtrusive. Kits are designed to be cut to length or joined together.





DIVERSE COLOUR OPTIONS

Available in:

Matte Black chrome, chrome, organic brushed brass, stainless steel, and iron bronze.

Kits are available in

750mm, 900mm, 1200mm, 1500mm & 2250mm;

Grates are available in

Brushed 306 stainless steel and solid brass



BRUSHED 306 GRADE
STAINLESS STEEL

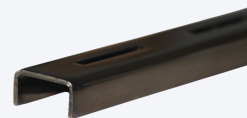


CHROME PLATED BRASS

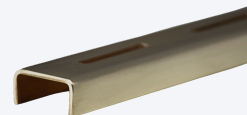


MATTE BLACK CHROME
PLATED BRASS

IRON BRONZE
ELECTROPLATED
BRASS



ORGANIC
BRUSHED BRASS



AGED BRASS



STRIP GRATE TILE INSERT SPILLWAY GRATE

Our tile insert grate perfectly matches your chosen tiles, offering customised installation. The variable-length drainage system features a tile tray positioned between two drainage slots, allowing the use of 15mm-thick tiles.

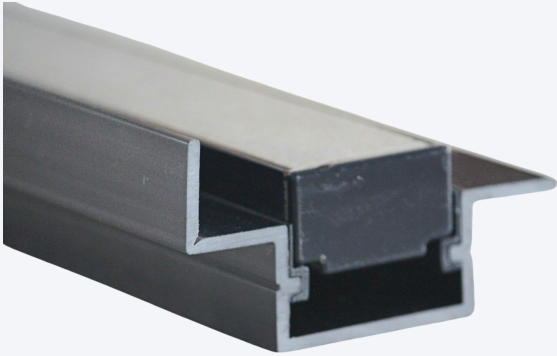
Our shower channel provides a versatile water drainage solution that can be cut to size or joined to match the width of your shower base. Featuring a spigot drainage outlet, it allows flexible positioning along the collection channel, ensuring simple alignment with new or existing plumbing.

The tile insert tray is finished in black to resemble a shadow line, giving a minimalist and clean appearance. It is designed to sit flush with the floor and seamlessly blend with the tiles, creating the illusion that there is no waste on the floor.

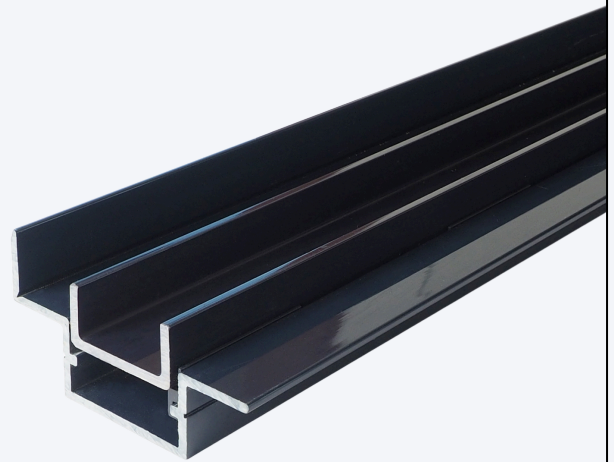


WMTS-040
WM-022353

SPILLWAY GRATE



Kits available in 1200mm - lengths can be added to or cut down to suit any length with a minimum of 350mm.



SPACER SYSTEM

Strip Grate unique system offers a simple way to lift the Strip Grate up to match finished tile height.

The spigot drainage outlet allows versatile positioning along the collections channel drain to line up with your plumbing underneath the substrate.



STRIP GRATE TILE GAP

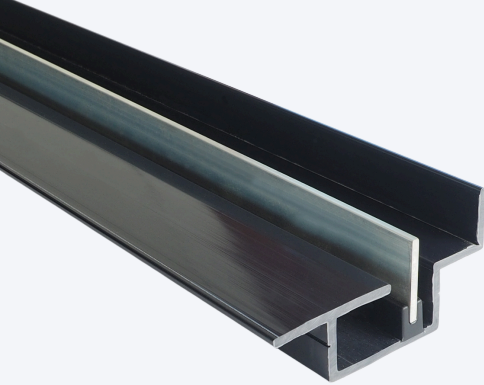
MINIMALIST BLADE

The tile-gap is our sleek, minimalist shower grate, which replaces the traditional grate appearance with a blade. The design of the blade provides an architectural, slimline look, creating a subtle floor waste aesthetic.

The Blade is positioned between two finished tile trim edges, with a 15mm gap and a 30mm aluminium blade. Our tile gap blade features an anodised finish to enhance its durability and resistance to corrosion.



WMMS-040
WM-022353



Tile gap uses a two-slot system with a 30mm aluminium blade between the two finished tile trim edge.

All Strip Grate collection channels, end caps, joiners, spacers and spigot outlets are made of ABS plastic. ABS plastic is non-toxic and the material will not break down over time or release harmful chemicals.

Colour Options:

Kits available in 1200mm

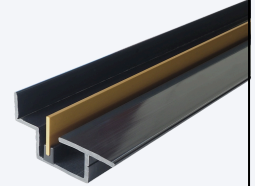
colours available are:
gold, matte black and aluminium



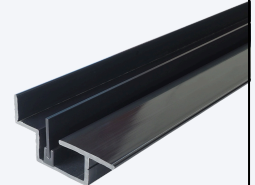
WMTS-040
WM-022353

TILE GAP

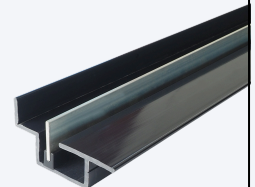
TILE -GAP ANODIZED
GOLD



TILE -GAP ANODIZED
MATTE BLACK



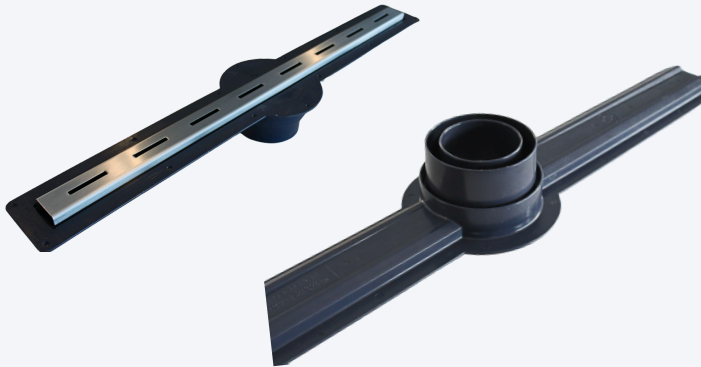
TILE-GAP ANODIZED
ALUMINIUM



STRIP GRATE THE STANDARD

The standard shower drain is a one-piece collection channel. The collection channel features a built-in fall to allow water to flow easily to the centre outlet, with hair-catching lugs to prevent drain blockage. This shower grate system is designed for off the wall installation.

Kits available in 750mm one piece collection tray with a fixed centre outlet that can be glued into a 80/100mm dwv sewer connector pipe. Available in the same colour range as the VL Strip Grates.



Waterproofing

The main advantage of Strip Grate Australia's design is the 20mm flange on the collection channel, this enables the collection channel to be waterproofed into place before tiling.

Any water that penetrates underneath your tiling will hit the waterproofing membrane and drain back into the collection channel.

We recommend waterproofing primer to be used on ABS flange is (Gripset OP)

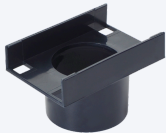
PARTS AND ACCESSORIES

Replacement or additional parts can be purchased separately. All our collection channel parts are made from ABS plastics, this gives you more durability and lifespan and is easier to handle and install.



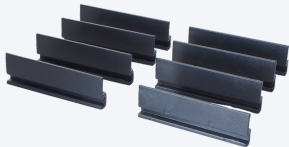
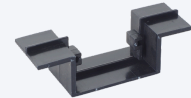
VL Corner pieces can be used for left and right-angled corner installations.

VL and Tile-Gap End caps.



50mm Spigot outlet, glues directly into 50mm PVC outlet or dropped into a puddle flange.

VL collection channel joiner allows you to join kits together.



Grate high adjustment spacers.

Weld-On 773 - ABS Glue is an interference fit, our preferred glue for ABS plumbing applications. Supplied with all kits.



WHY CHOOSE A STRIP GRATE?

We recognise that waterproofing issues are among the most common complaints in the building industry. As licensed water proofers, we have seen firsthand the damage caused by improper drain products and insulation. When Strip Grate Australia came into our ownership, we knew we had to educate others on the importance of our unique product.

Our Strip Grate design is unique because it is waterproofed in place, becoming an integral part of the plumbing system. The shower grate is installed before the waterproofing and tiling, allowing any sub-tile water to drain back into the collection channel. This prevents water pooling, which can cause water damage, mould growth, and other problems.

All strip grate kits are designed to provide easy installation that meets Australian plumbing and waterproofing standards. They can be easily installed by any tradesperson, with installation videos on our website.

Our products have been tested to Australian standards and hold the watermark certification. Our linear shower drains and strip grates are simple to use, innovative and quick to install.

Up to 10 Years Warranty

Strip Grate Australia is committed to providing high-quality products designed to meet the highest industry standards. Our warranty reflects our confidence in the durability and reliability of our products.

Contact Us

mail@stripgrate.com.au
www.stripgrate.com.au

QR CODE FOR
INSTALLATION
INSTRUCTIONS

